



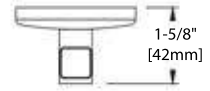
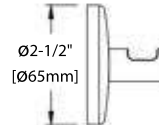
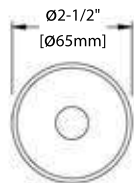
**BLOSSOM**  
luxury made simple

INSTALLATION MANUAL

# **Bathroom Accessories**

500 Series

**BA02 501**



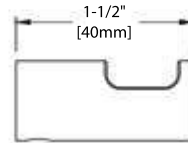
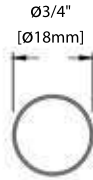
ROBE HOOK

FRONT VIEW

SIDE VIEW

TOP VIEW

**BA02 501N**



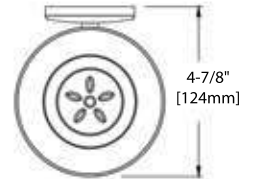
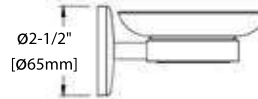
ROBE HOOK

FRONT VIEW

SIDE VIEW

TOP VIEW

**BA02 502**



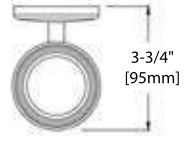
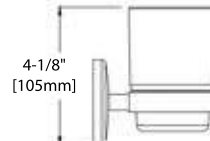
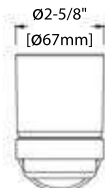
SOAP HOLDER

FRONT VIEW

SIDE VIEW

TOP VIEW

**BA02 503**



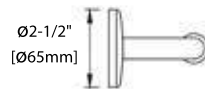
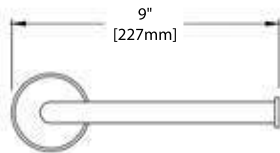
TOOTHBRUSH HOLDER

FRONT VIEW

SIDE VIEW

TOP VIEW

**BA02 504**



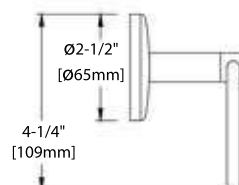
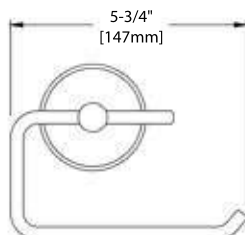
TOWEL BAR

FRONT VIEW

SIDE VIEW

TOP VIEW

**BA02 505**



TISSUE HOLDER

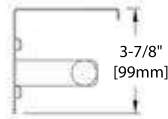
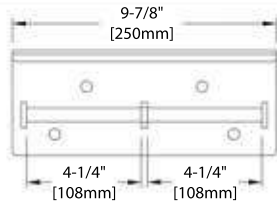
FRONT VIEW

SIDE VIEW

TOP VIEW

**INSTALLATION MANUAL**

BA02 505D



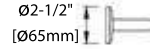
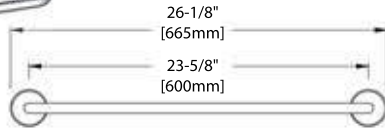
DOUBLE TISSUE HOLDER

FRONT VIEW

SIDE VIEW

TOP VIEW

BA02 506



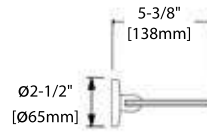
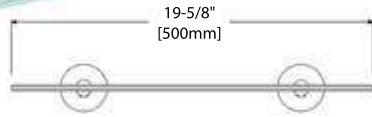
24" SINGLE TOWEL BAR

FRONT VIEW

SIDE VIEW

TOP VIEW

BA02 507



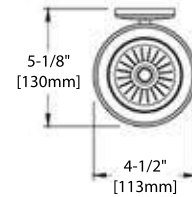
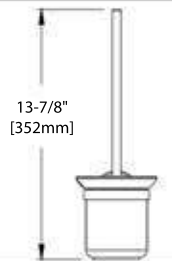
GLASS SHELF

FRONT VIEW

SIDE VIEW

TOP VIEW

BA02 508



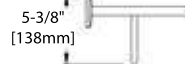
TOILET BRUSH HOLDER

FRONT VIEW

SIDE VIEW

TOP VIEW

BA02 509



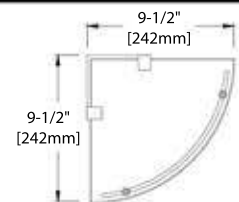
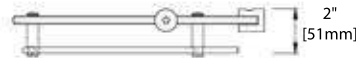
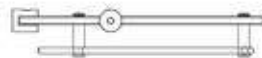
TOWEL RACK

FRONT VIEW

SIDE VIEW

TOP VIEW

BA02 510



CORNER SHELF

FRONT VIEW

SIDE VIEW

TOP VIEW

INSTALLATION MANUAL

## REQUIRED TOOLS



Tape Measure



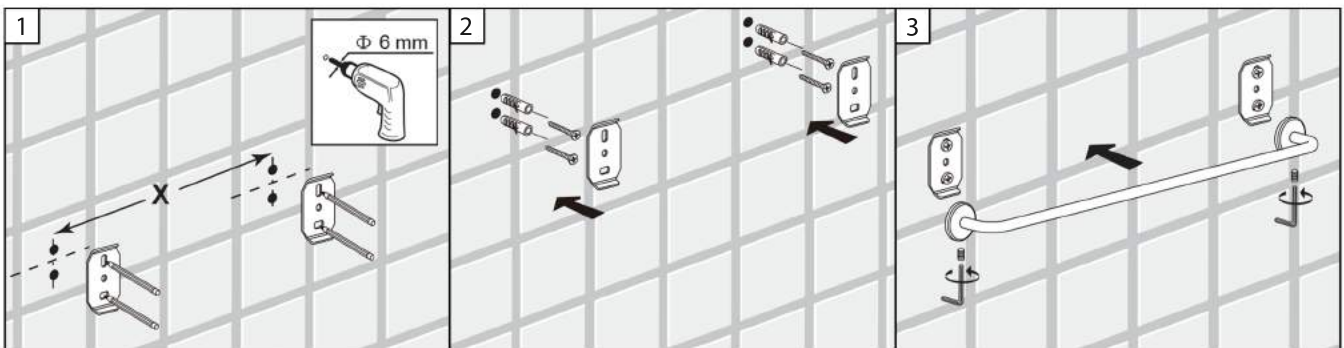
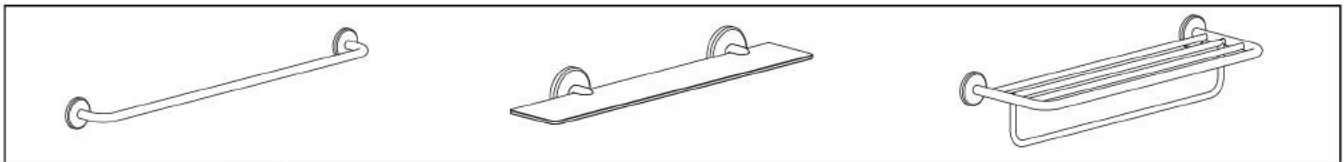
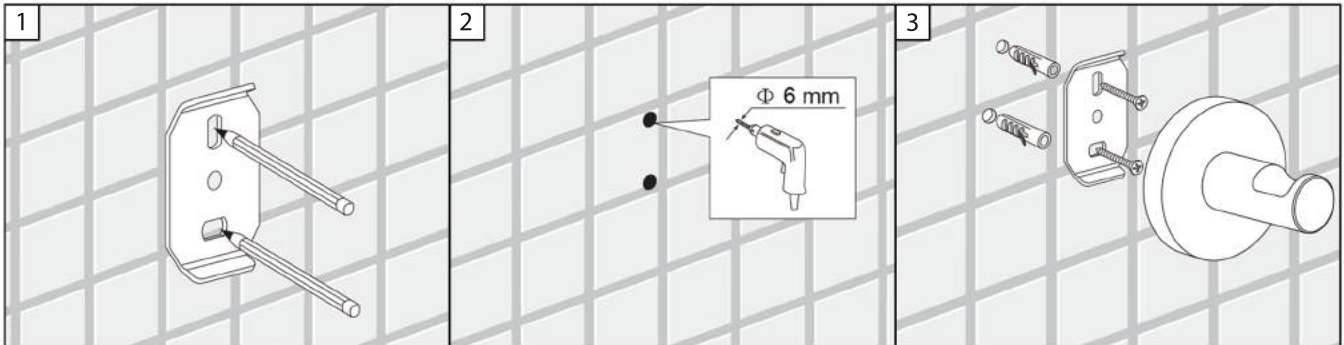
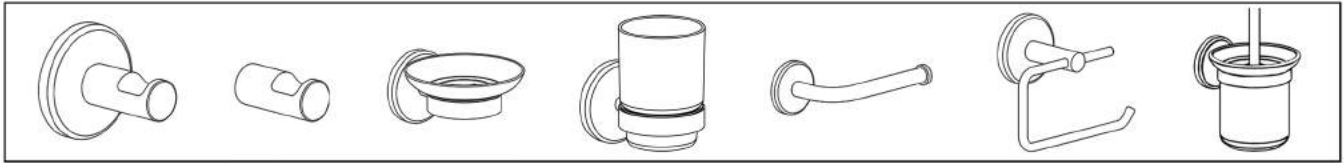
Pencil



Electric Drill



Drill Bit (6mm)



## INSTRUCTIONS FOR CLEANING

### Care Instructions:

To maintain and protect the fine luster of all bath accessories, clean with a soft, damp cloth only. DO NOT USE scrub pads, detergents or cleaners as they may harm the protective finish of your accessoires.

### ⚠ WARNING!

This item is not designed for use as a grab bar. Do not install where the product might be used as a grab bar.

### ⚠ WARNING!

Use caution when drilling into walls to avoid drilling into electrical and plumbing lines hidden within wall.

### Warranty:

Warranted to be free from manufacturing defects for a period of (1) year from date of purchase. Please keep in mind this is only for kitchen and bath accessories.